

Earthquake Resilience Evaluation

DEFINE PROJECT

Why Earthquake Resilience?

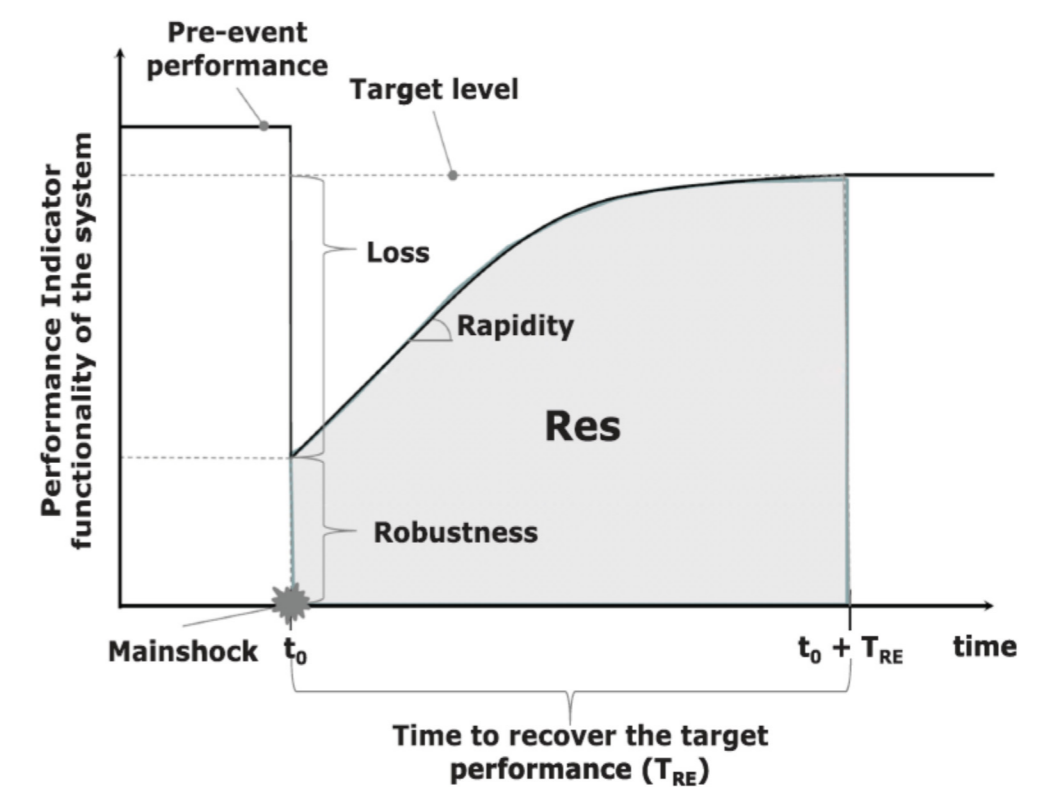


76 earthquakes with magnitude > 7.0 or above occurred in mainland China between 1900 and 2007; among which **6** earthquakes with a magnitude of 8.0 or above were recorded.

Earthquake Resilience (Theoretical)

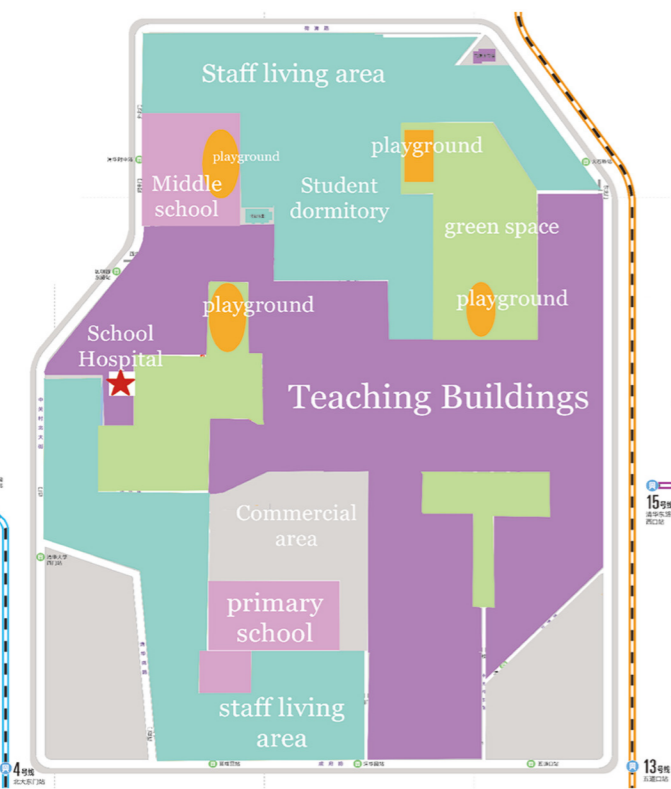
The ability of social units to mitigate disasters, absorb the impacts of disasters and take measures to recover in time, so as to reduce social disturbances and mitigate the effects of future earthquakes.

—Michel Bruneau et al



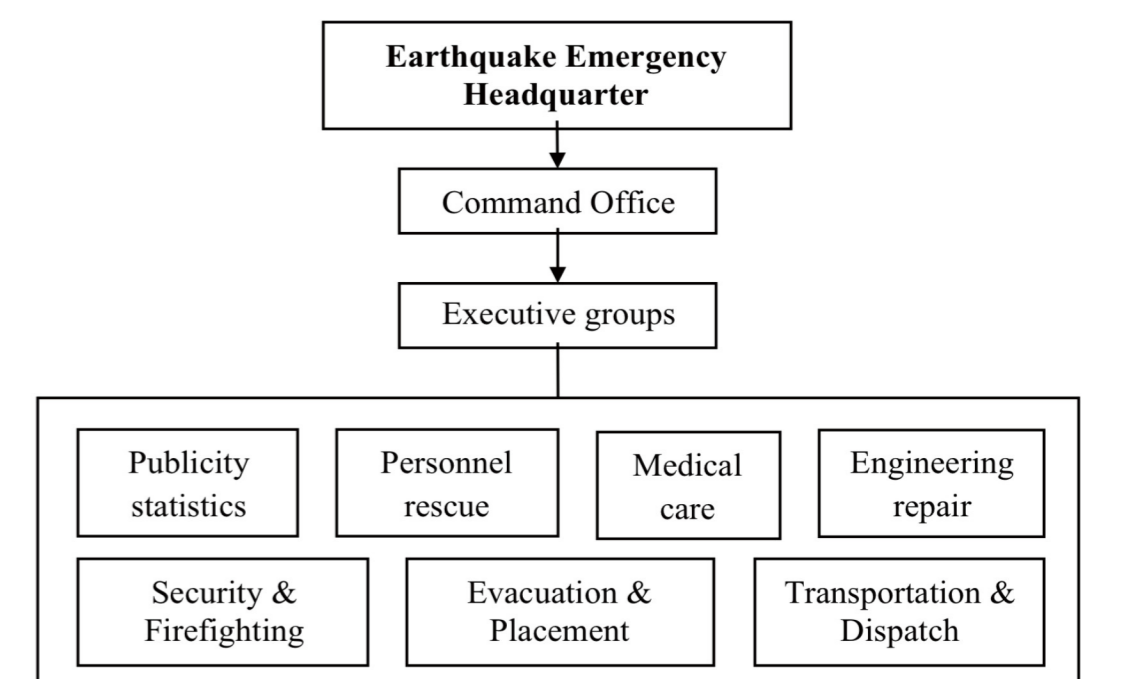
INVESTIGATION IN TSINGHUA

Facts in Tsinghua



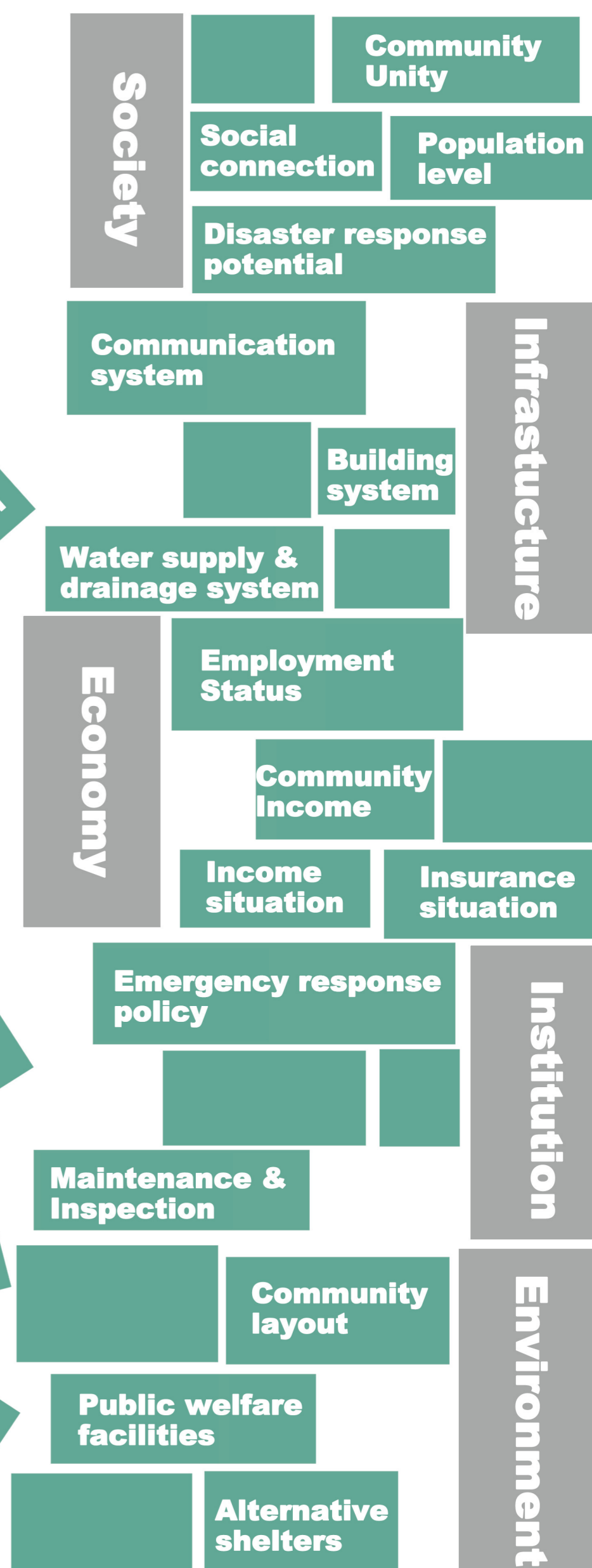
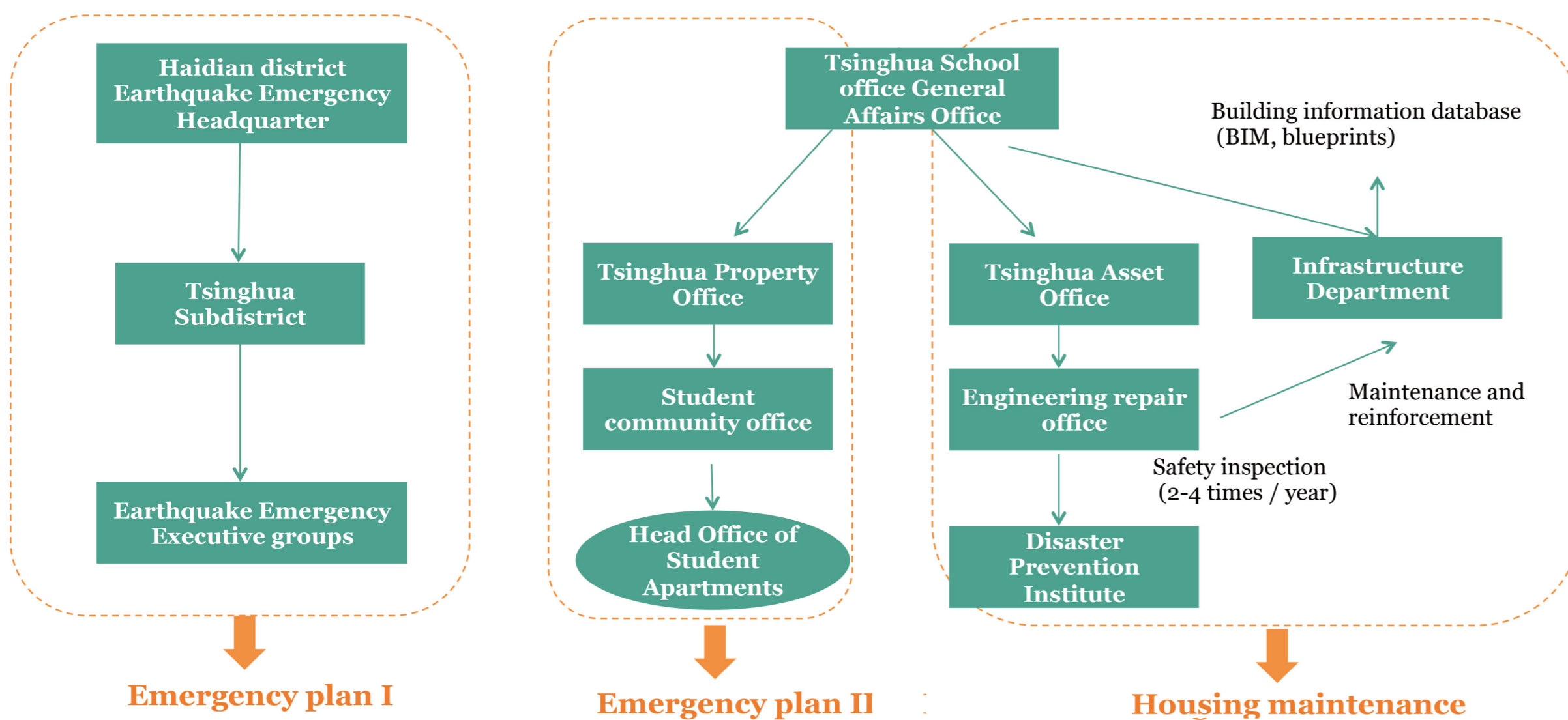
- Accommodation areas
- Teaching area
- Hospital
- Middle School
- Primary school
- Open areas and greening

- 97% familiar with school hospital location
- 31% familiar with nearest police station location
- 13% had experienced an earthquake
- 91% claim to know how to escape in an earthquake
- 95% choose playground as their shelter
- 61% claim to have basic first-aid skills
- only 4% believe they can remain calm in an earthquake
- 24% heard of the concept of earthquake resilience

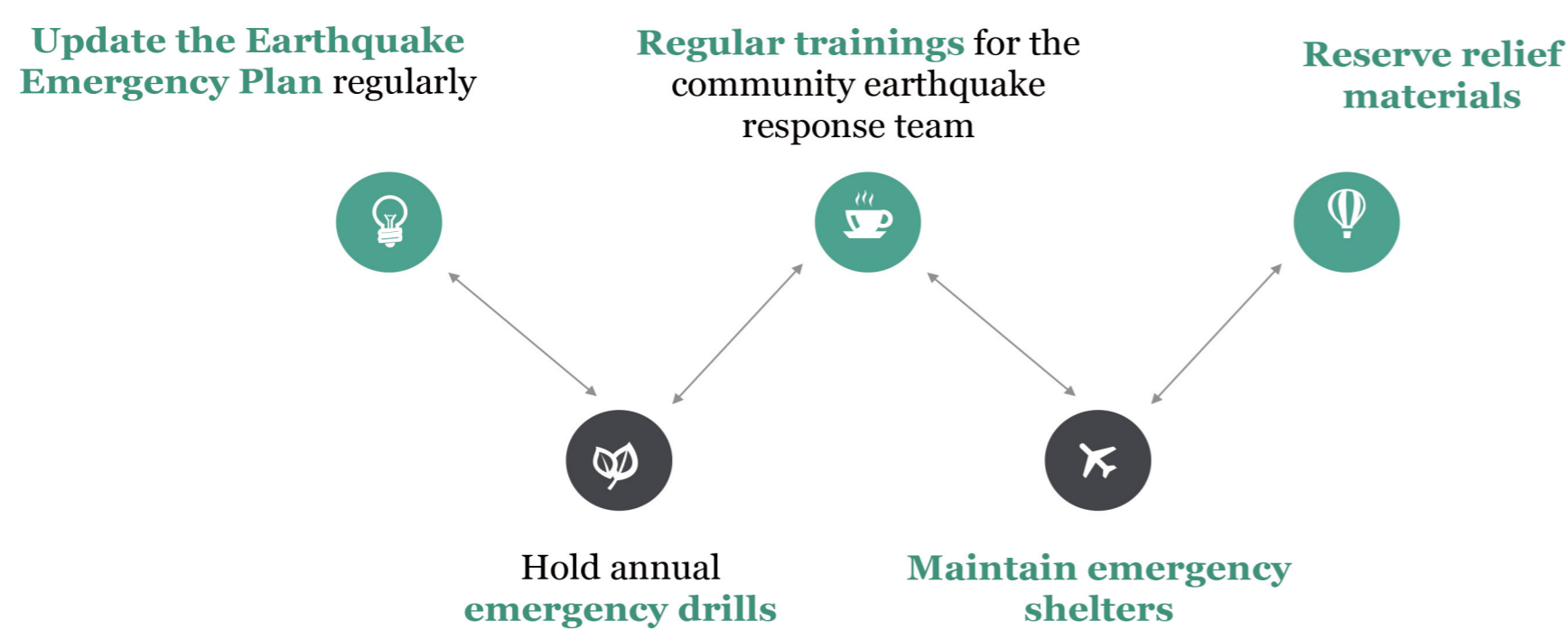


*Earthquake emergency organization structure

Earthquake Emergency Plan



Normal Insurance methods



DON'T LET IT CRASH